

Revit User Guide for

DAVISON HIGHLEY



Boulevard

Version 2.0 | Revit 2015

April 2019

Created by



Diane
Butterworth

DavisonHighley_Stng_Boulevard_Arm

File Features

- Multiple Finishes (please see manufacture brochure)
- Multiple Types in File (see below)



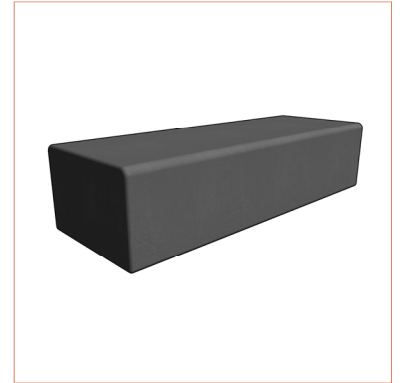
Predefined Types

Family Type	Width	Depth	Height
High Back with Feet	50	451	1225
High Back with Legs	50	451	1225
Low Back with Feet	50	451	875
Low Back with Legs	50	451	875

DavisonHighley_Stng_Boulevard_Bench

File Features

- Multiple Finishes (please see manufacture brochure)
- Multiple Types in File (see below)



Predefined Types

Family Type	Width	Depth	Height
1 Seater with Feet	600	650	435
1 Seater with Legs	600	650	435
2 Seater with Feet	1200	650	435
2 Seater with Legs	1200	650	435
3 Seater with Feet	1800	650	435
3 Seater with Legs	1800	650	435

DavisonHighley_Stng_Boulevard_Corner

File Features

- Multiple Finishes (please see manufacture brochure)
- Multiple Types in File (see below)



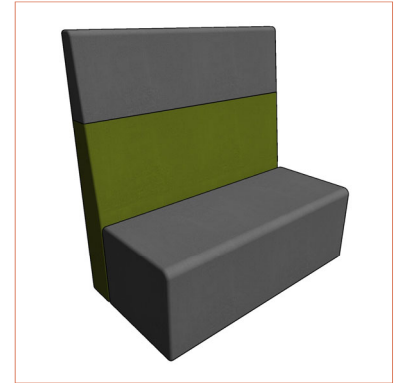
Predefined Types

Family Type	Width	Depth	Height
High Back with Feet	650	650	1225
High Back with Legs	650	650	1225
Low Back with Feet	650	650	875
Low Back with Legs	650	650	875

DavisonHighley_Stng_Boulevard_Straight

File Features

- Multiple Finishes (please see manufacture brochure)
- Multiple Types in File (see below)



Predefined Types

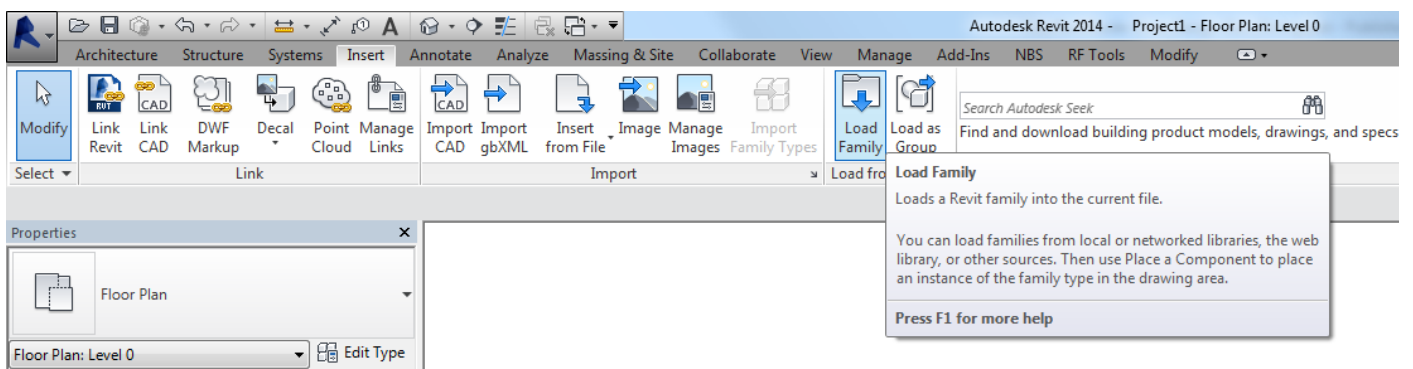
Family Type	Width	Depth	Height
1 Seater High Back with Feet	600	650	1225
1 Seater High Back with Legs	600	650	1255
1 Seater Low Back with Feet	600	650	875
1 Seater Low Back with Legs	600	650	875
2 Seater High Back with Feet	1200	650	1225
2 Seater High Back with Legs	1200	650	1225
2 Seater Low Back with Feet	1200	650	875
2 Seater Low Back with Legs	1200	650	875
3 Seater High Back with Feet	1800	650	1225
3 Seater High Back with Legs	1800	650	1225
3 Seater Low Back with Feet	1800	650	875
3 Seater Low Back with Legs	1800	650	875

A simple guide to using your Revit Ready file.

1. LOAD IT

The range can consist of one or more Revit families, these contain predefined types as outlined above in the predefined types and the manufactures brochure.

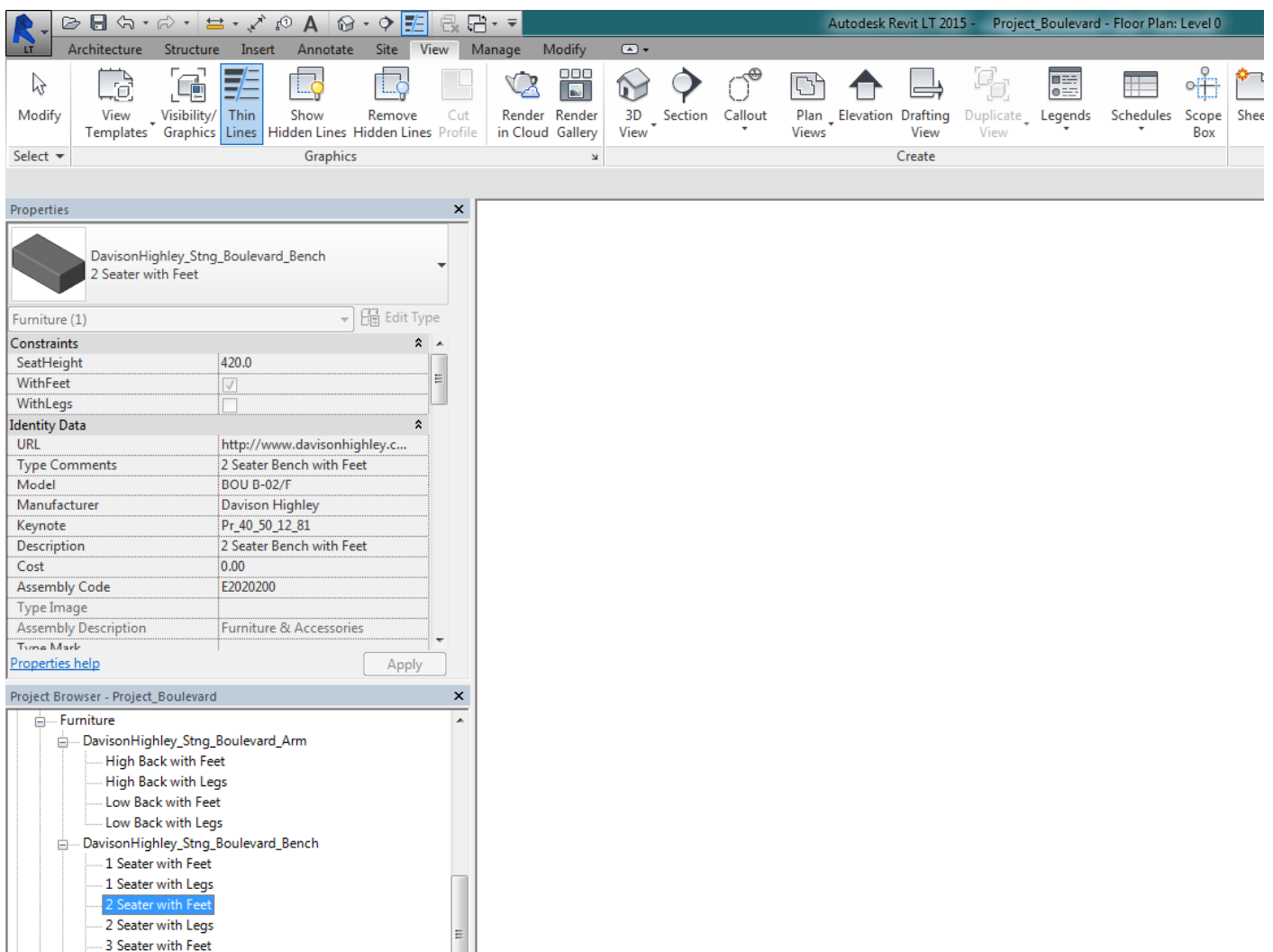
After downloading and saving the file to a suitable location go to 'Insert Tab/Load Family...'



A simple guide to using your Revit Ready file.

2. USE IT

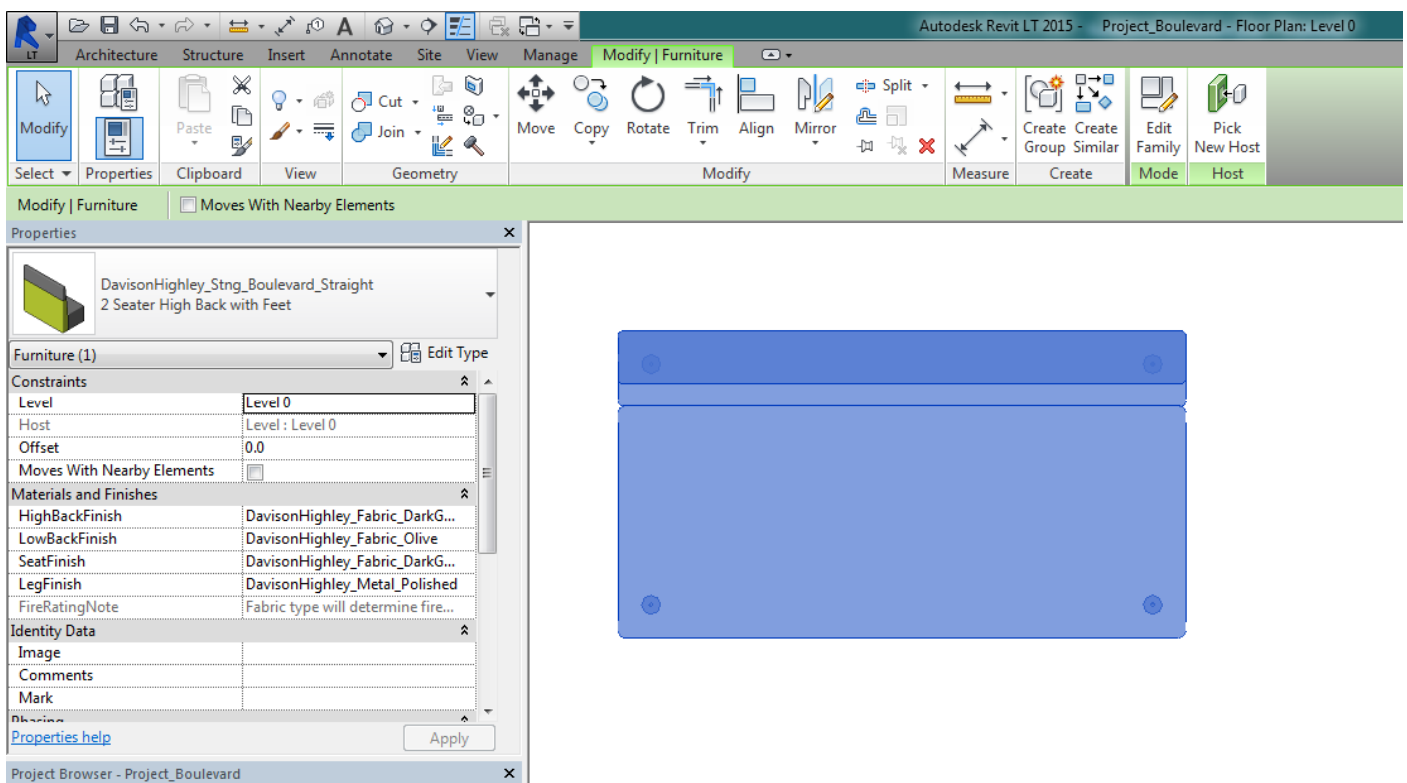
Once your family is loaded in, it will be located in the 'Project Browser/Families/Furniture' tab. Types are named in a way to ensure ease of selection. Click and drag your chosen item into your floor plan.



A simple guide to using your Revit Ready file.

3. CUSTOMISE IT

Once an item is selected it will turn blue, the properties panel will then display the parameters available. Here you will be able to make changes to the finishes. All material options will load in with the family, click the 'materials and finishes' parameter to view.



Additional information

This component has been created by Diane Butterworth Ltd following the manufacturer's specification.

We hope our Revit files are a helpful tool in space planning and visualisation. We take care in ensuring all dimensions and features match manufacturer's literature, however actual products may vary slightly.

We would love to hear from you, if you have any questions or feedback please email hello@dianebutterworth.com

Thank you for using this Revit Family.

